
Effect of AGN on star formation with ALMA and EAGLE

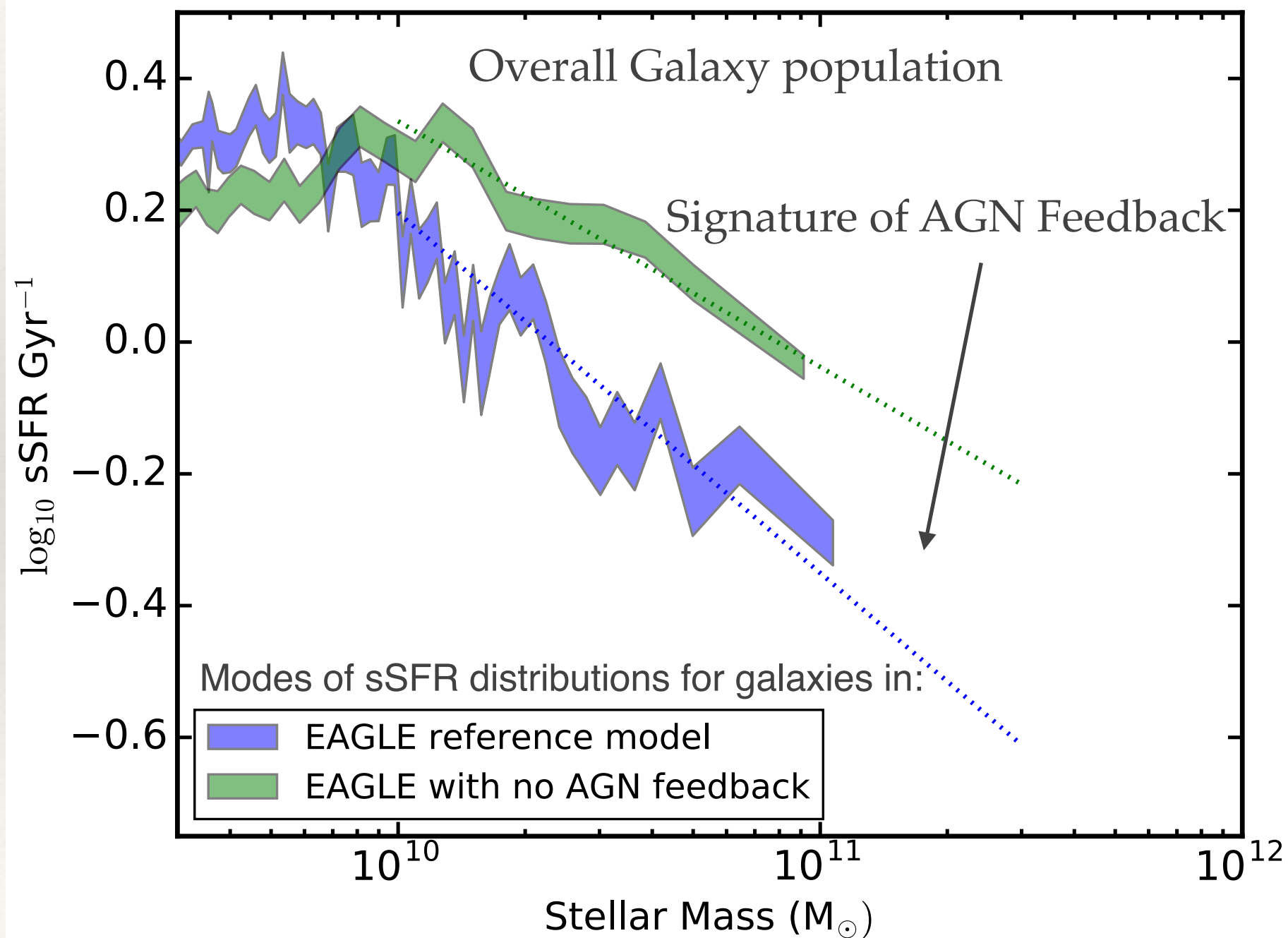
JAN SCHOLTZ
Durham University



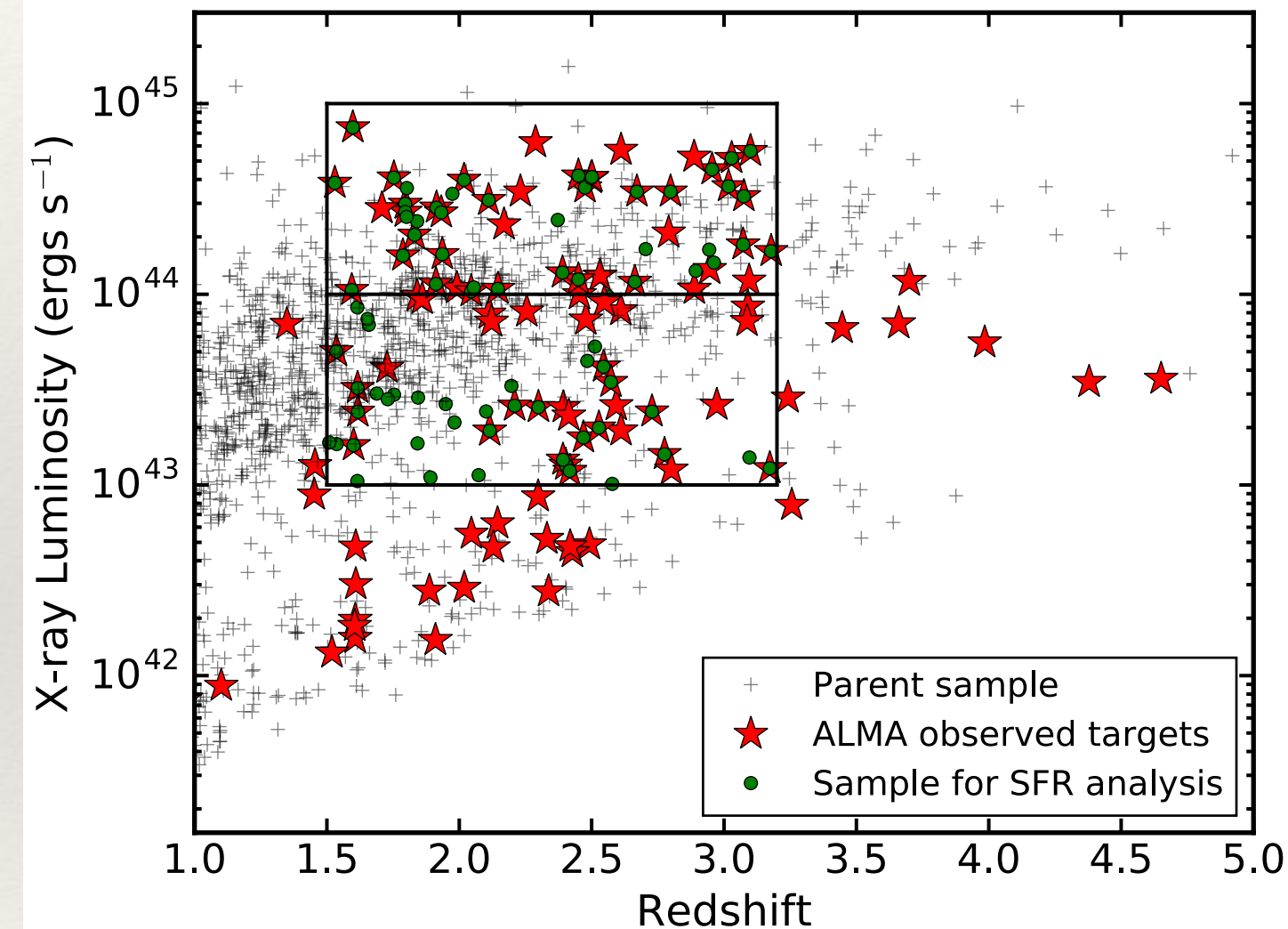
Dave Alexander, David Rosario, Chris Harrison and others

DEX- XIII Edinburgh 2017

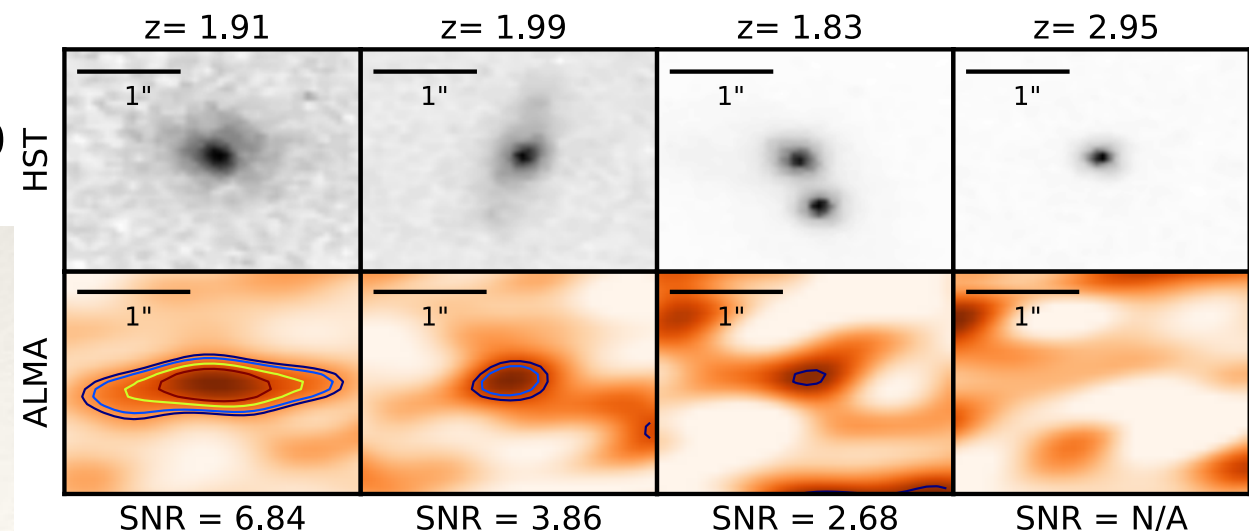
Evidence of Feedback in Simulations



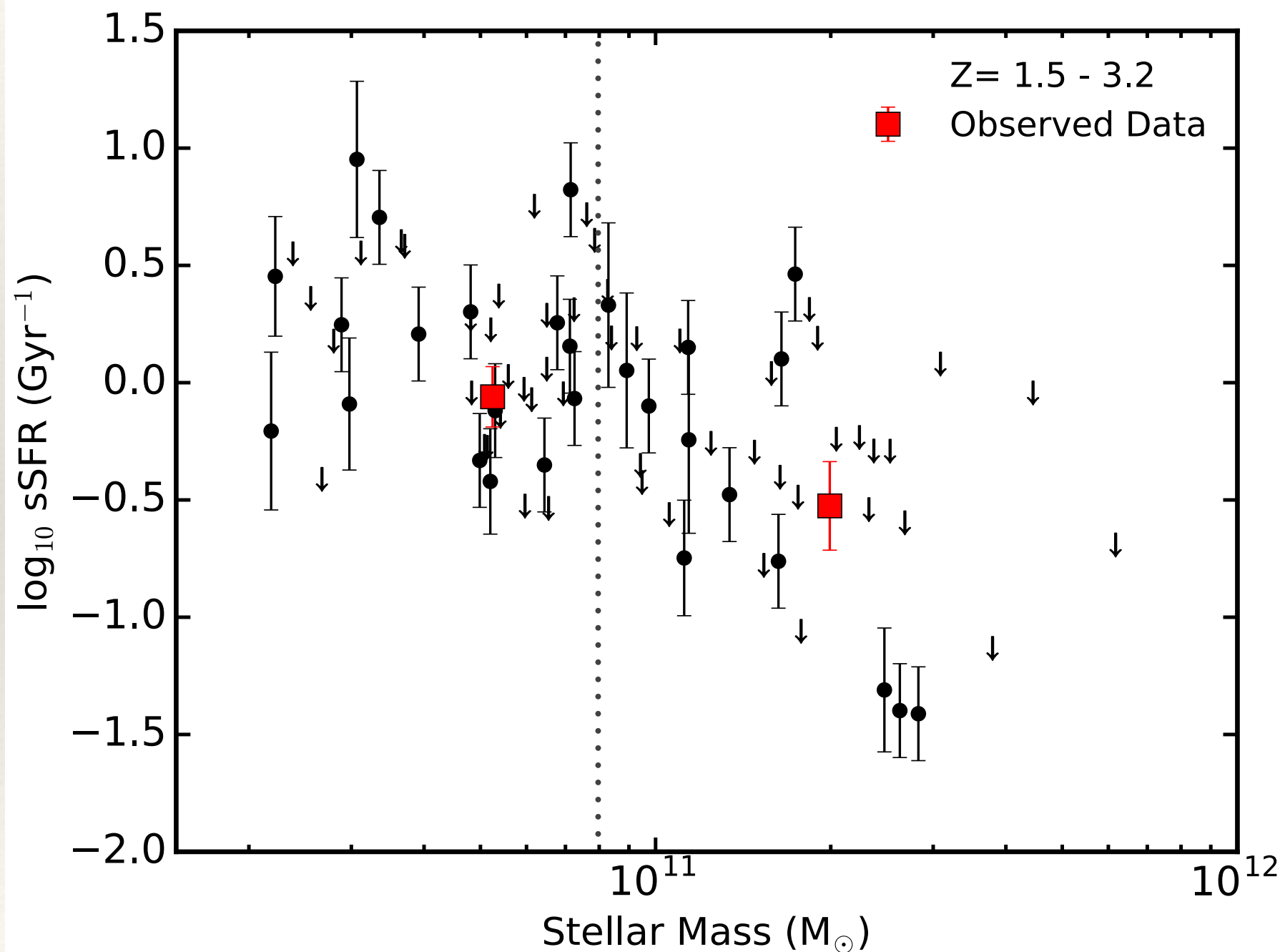
Observational Data



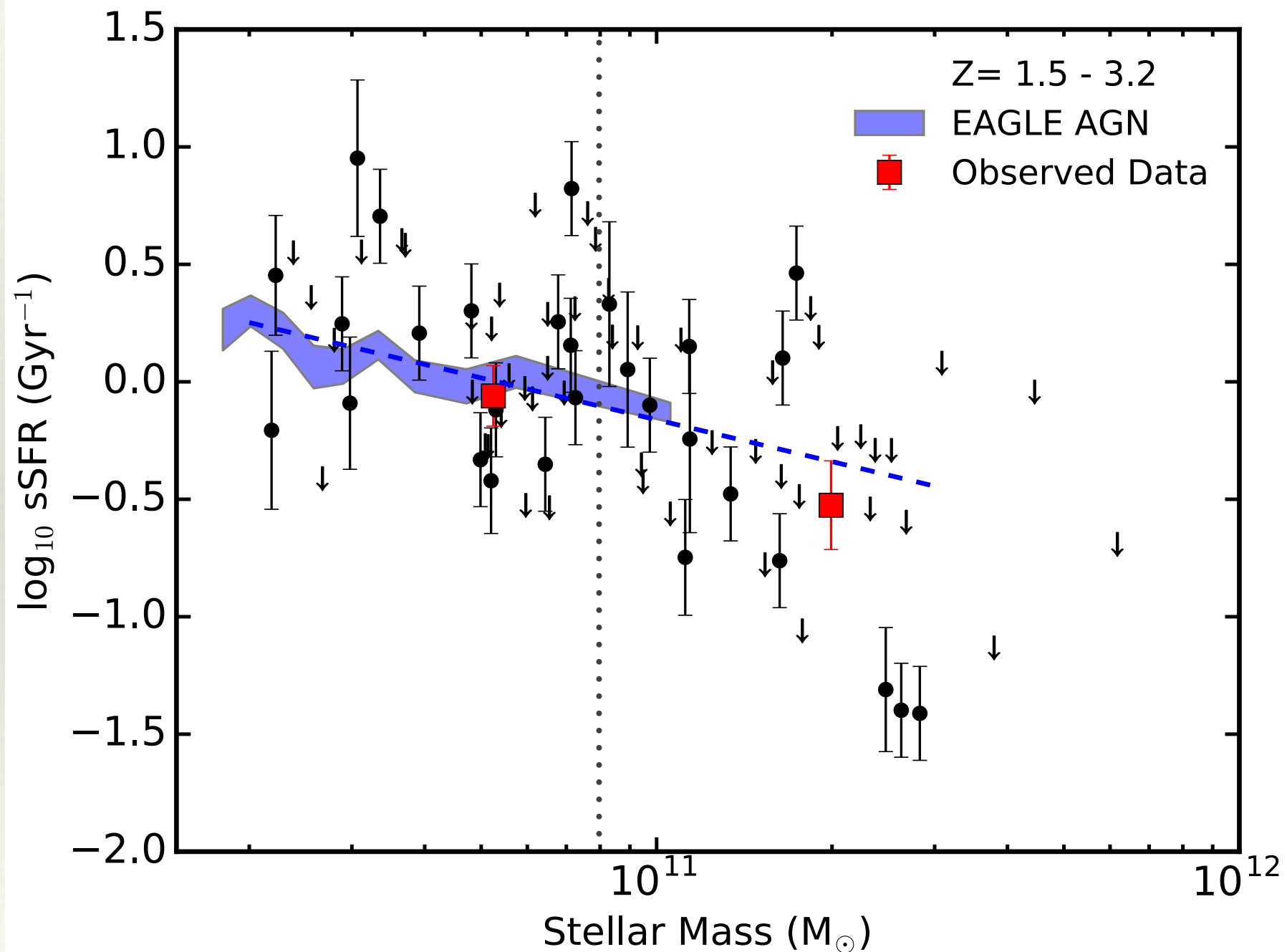
- ❖ 89 luminous AGN in redshift 1.5 - 3.2, observed with ALMA
- ❖ We fitted SF and AGN templates to ALMA, HERSCHEL and MIPS photometry



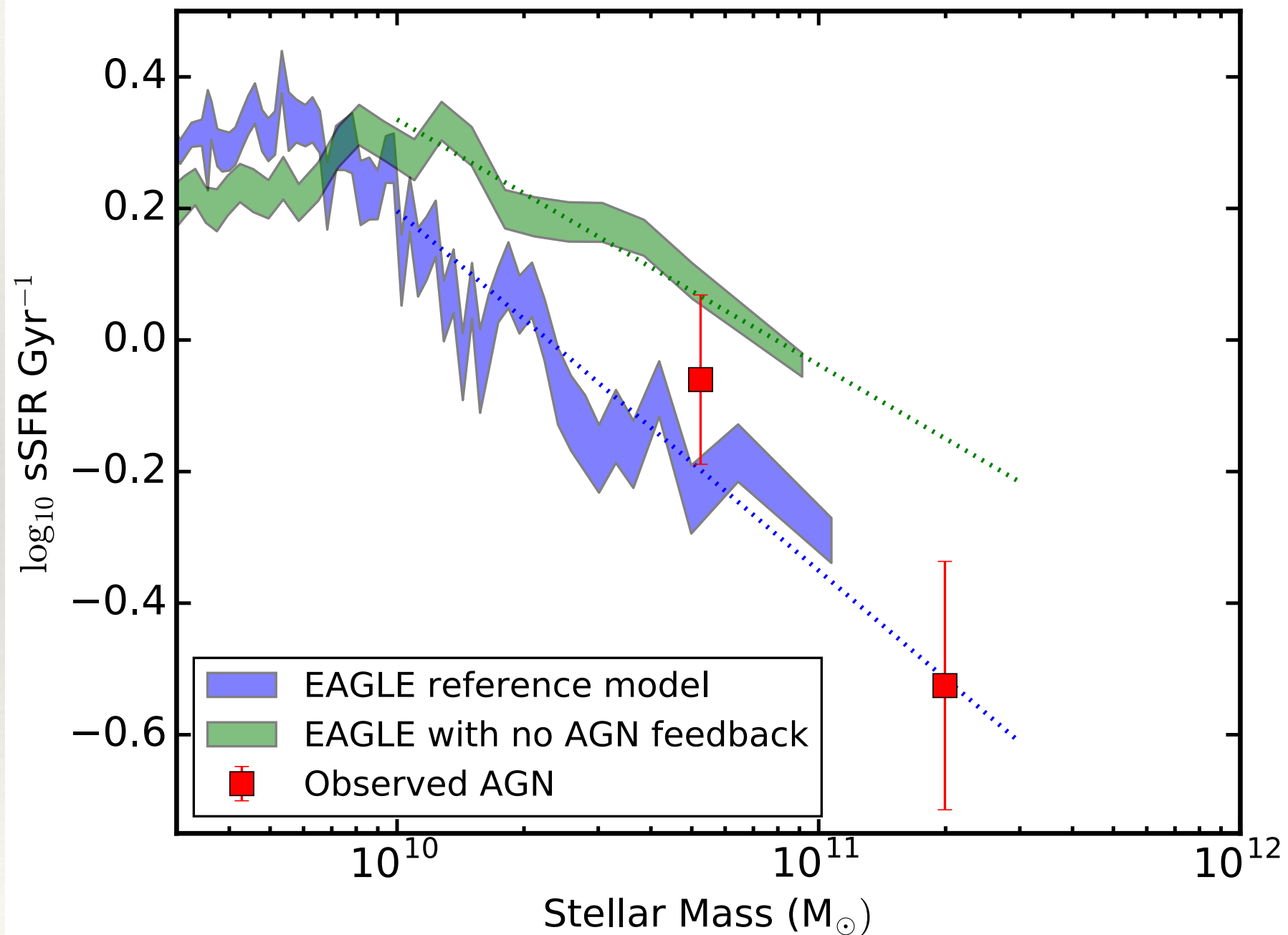
AGN show decreasing sSFR with Stellar Mass



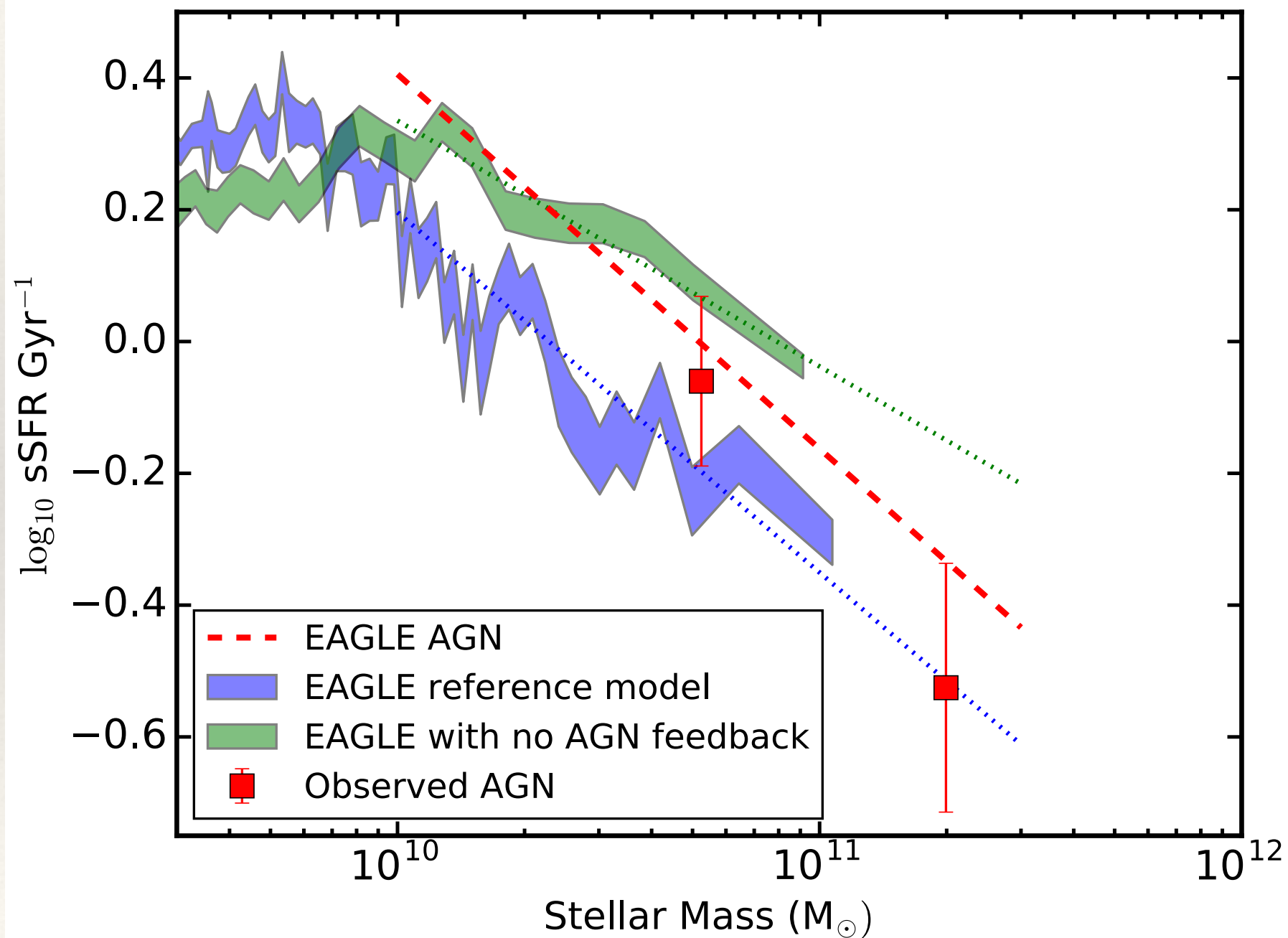
and so does EAGLE AGN



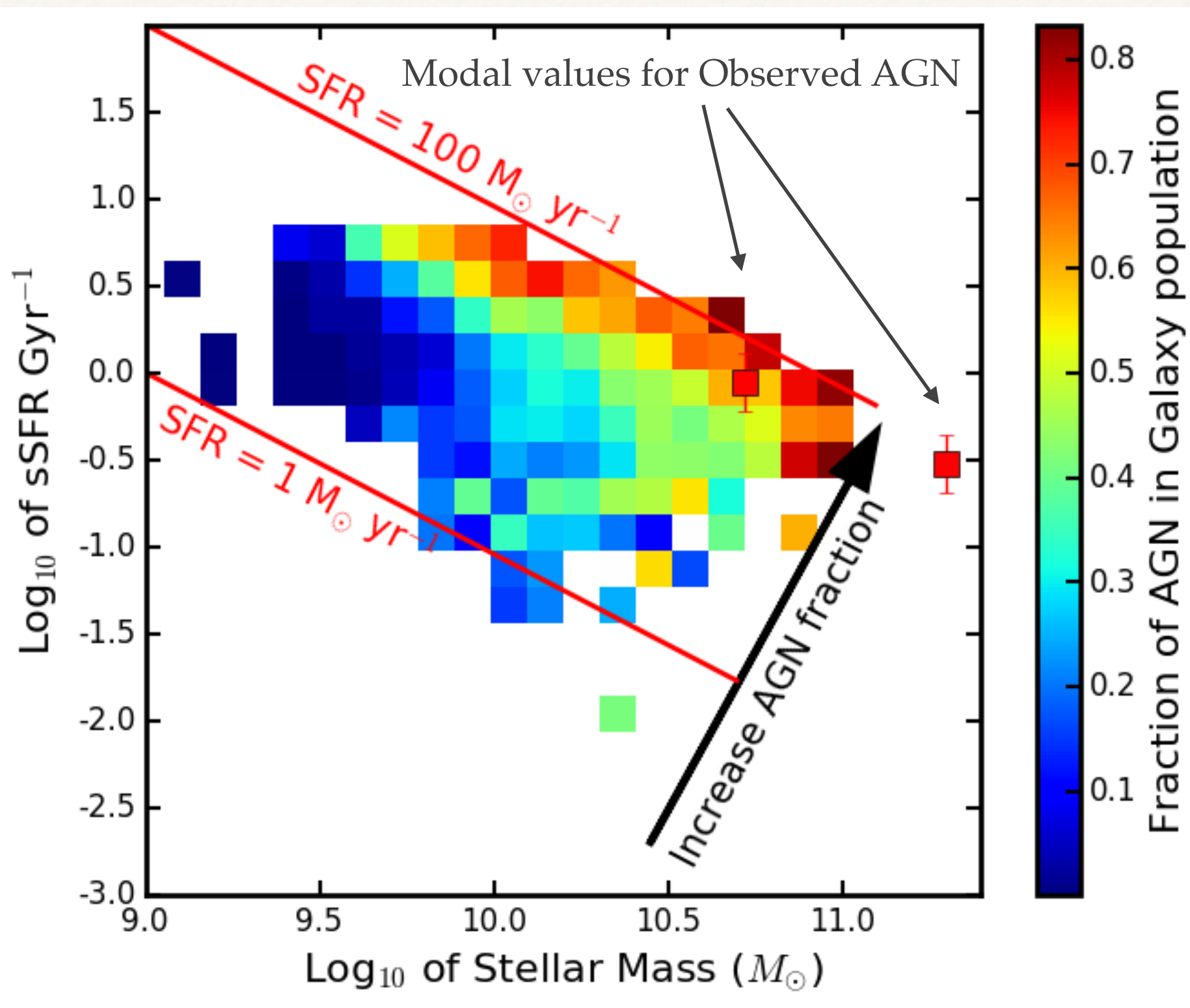
Evidence of Feedback



Evidence of Feedback



Where are AGN?



Summary

- ❖ We used to different versions of EAGLE and ALMA observations to investigate effect of AGN Feedback
- ❖ AGN feedback can be seen in the decline of sSFR with stellar mass
- ❖ By selecting AGN, we also select star-forming galaxies boosting the modes of distributions of s(SFR)
- ❖ talk to me about more results

sSFR vs X-ray Luminosity

