

For more information please contact:

Dr Julian Dines (Head of Innovation)

[julian.dines@stfc.ac.uk](mailto:julian.dines@stfc.ac.uk)

Tel: +44 (0) 131 668 8318

Donald MacLeod (Facilities)

[donald.macleod@stfc.ac.uk](mailto:donald.macleod@stfc.ac.uk)

Tel: +44 (0) 131 668 8260

Karina Wardak (Incubation)

[karina.wardak@stfc.ac.uk](mailto:karina.wardak@stfc.ac.uk)

Tel: +44 (0) 131 668 8290

[stfc.ukri.org/ukatc](http://stfc.ukri.org/ukatc)

[www.roe.ac.uk/higgscentre](http://www.roe.ac.uk/higgscentre)

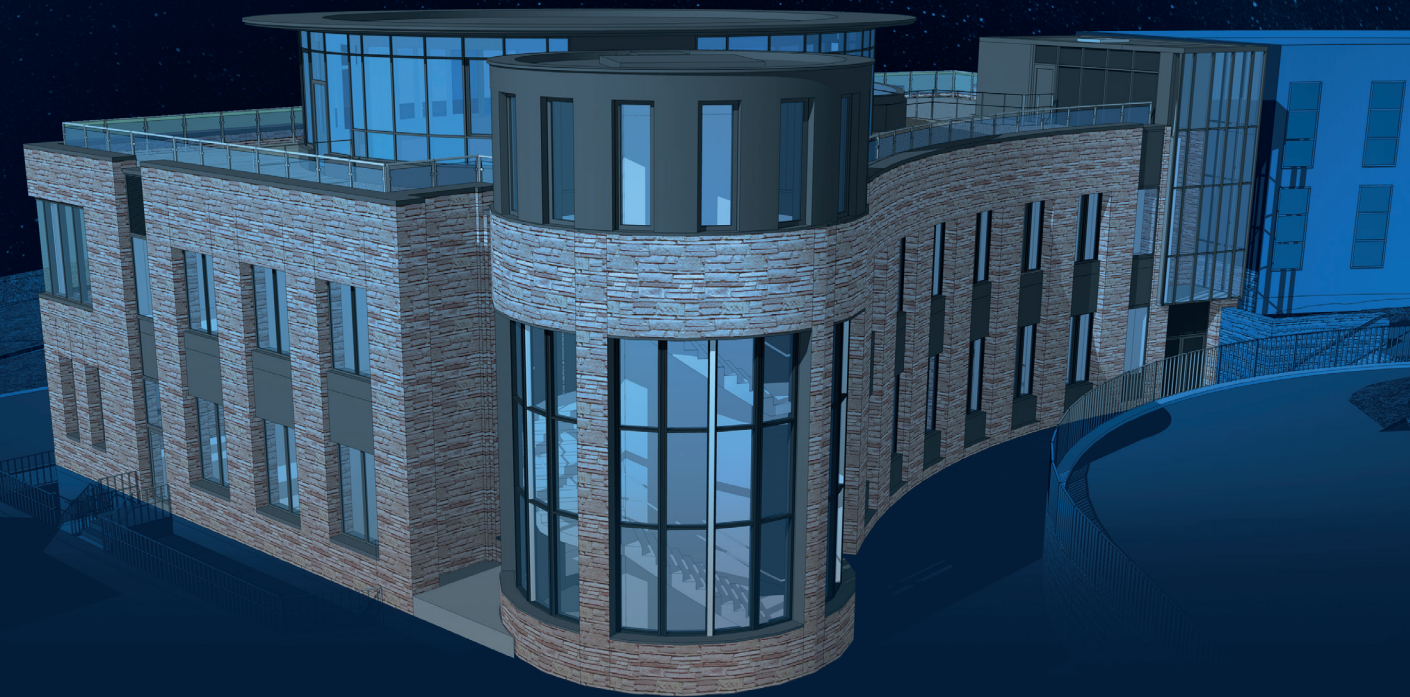
 #HiggsInnovation



**Higgs Centre for Innovation**

Science & Technology Facilities Council

A new business incubation centre and specialist laboratories at the Royal Observatory Edinburgh supported by the expertise of the STFC's UK Astronomy Technology Centre



In Partnership With



THE UNIVERSITY  
of EDINBURGH



business incubation centre  
UK



Science and  
Technology  
Facilities Council



# Higgs Centre for Innovation

## Business Incubation Centre

This ground-breaking new facility, created by the Science & Technology Facilities Council (STFC) and in partnership with the University of Edinburgh, applies business incubation best practice to big data, astronomy, particle physics and space technology, enabling start-ups to translate fundamental research into wider commercial impact. Incubated companies also have access to the Specialist Lab facilities and Data Visualisation Suite.

The Business Incubation Centre includes a comprehensive support package for successful applicant companies to develop new products and services in areas related to space, big data and high precision engineering.

These three domains are supported by three related programmes:

- European Space Agency (ESA) BIC
- CERN BIC
- Higgs BIC

We can accommodate up to 15 start-ups at any one time with companies staying for 1-2 years each. The programmes offer:

- Business training and mentoring for companies to help them to grow
- Access to technical expertise from STFC and University of Edinburgh
- Access to test and development facilities
- Incentive package for new product development
- Link in to STFC's wider network of facilities, experts and companies
- PhD student placements

## Data Visualisation Suite

Our Data Visualisation Suite contains two 4K rear projectors seamlessly integrated to give a 7.5m wide screen for use in the large-scale data analytics sector. Big Data visualisation tools are gaining more and more traction within industry to communicate complex information effectively. The suite incorporates a 4k video broadcast capability with integrated audio and collaborative tools for remote working.



## Specialist Lab Facilities

### Specialist Labs & Space Testing

The Facilities at the Higgs Centre, designed for collaborative use by Industry, Academia and Research Institutions, include a comprehensive suite of space test facilities for micro/nano-satellites and components, as well as other specialist facilities.

Equipment is housed within a secure suite of ISO 5-7 clean rooms. These include:



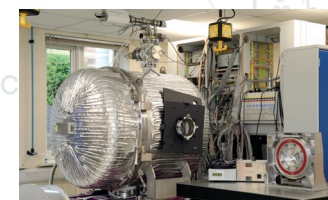
#### EMC pre-compliance testing:

- Radiated susceptibility
- Radiated emission
- Conducted emission
- Near field probing



#### Vibration testing:

- Sine (40kN)
- Random (40kN)
- Shock (80kN)



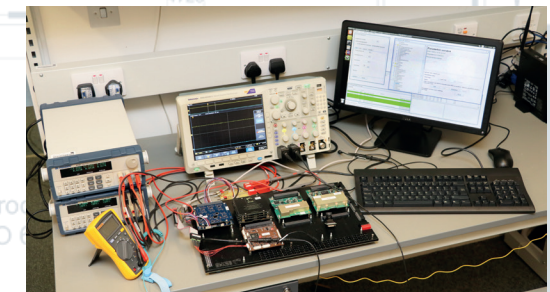
Corridor  
ISO 6

#### Vacuum testing:

- Thermal Vacuum
- Cryo Vacuum
- Vacuum Ovens

#### Functional testing:

- Flatsats - Clyde Space (NANOBED), Pumpkin, Tyvak
- Functional RF test (to 26 GHz)
- Functional optical test (10 cm & 30 cm aperture)
- Spacewire test (STAR Dundee and 4Links equipment)



The centre will offer full technical support and assistance to our partners in their technology development programmes.

