

The Evolution of the Far-Infrared-Radio Correlation in Massive Star-Forming Galaxies Over the Last 10 Billion Years

N. Bourne, L. Dunne, S.J. Maddox
University of Nottingham, UK

R.J. Ivison
University of Edinburgh, UK

M. Dickinson
NOAO, Tucson, USA

D. Frayer
Spitzer Science Center, California Institute of Technology, USA

Summary

- Rationale
 - Aims
 - Context
- This work
 - Sample selection
 - Stacking technique
 - Data analysis considerations
- Results and discussion:
 - Radio properties
 - IR Spectral Energy Distributions
 - K-corrections
 - FRC evolution
- Conclusions

Rationale

- The question:

“Does the FIR-Radio Correlation persist to high redshift?”

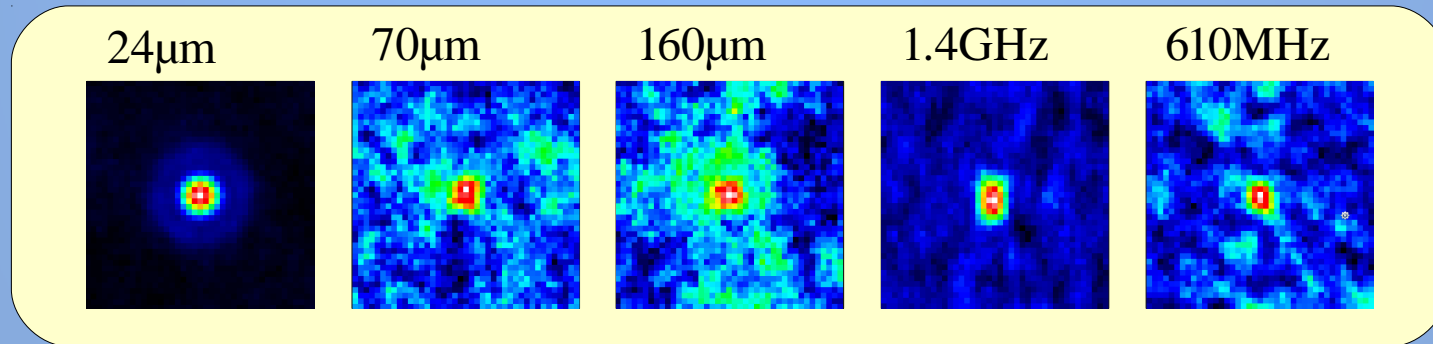
- ...is addressed by a lot of recent/ongoing research, e.g.
 - Appleton et al. 2004
 - Frayer et al. 2006
 - Ibar et al. 2008
 - Garn et al. 2009
 - Seymour et al. 2009
 - Sargent et al. 2010
- etc etc ...
- But so far all of these studies have focused on samples selected by flux in the FIR and/or radio bands
- In this study, we want to address the question for a more general sample of massive galaxies selected in the NIR

Sampling and Stacking

- The sample:
 - 3500 IRAC (3.6+4.5 μ m) selected galaxies in the ECDFS
 - Photo-z's from COMBO-17 and EAZY (Damen et al 2009)
- Stacking into:
 - FIR imaging from Spitzer (FIDEL survey) at 24, 70, 160 μ m
 - Radio imaging at 1.4GHz (VLA) and 610MHz (GMRT)
- Median-stacking in bins of redshift to trace properties of the 'typical' galaxies in the sample
- Measure FIR-Radio Correlation (FRC) using log ratio of stacked (corrected) fluxes in each bin (i.e. q)

Data Analysis

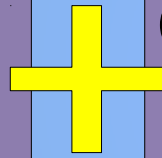
- We can measure point-source fluxes in the stacked images:



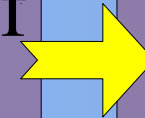
- But in the MIPS data in particular, we must consider these two important effects:
 - Confusion
 - K-corrections

Clustering, Confusion and Background Subtraction

Poor resolution
of MIPS imaging



Clustered nature of
massive galaxies



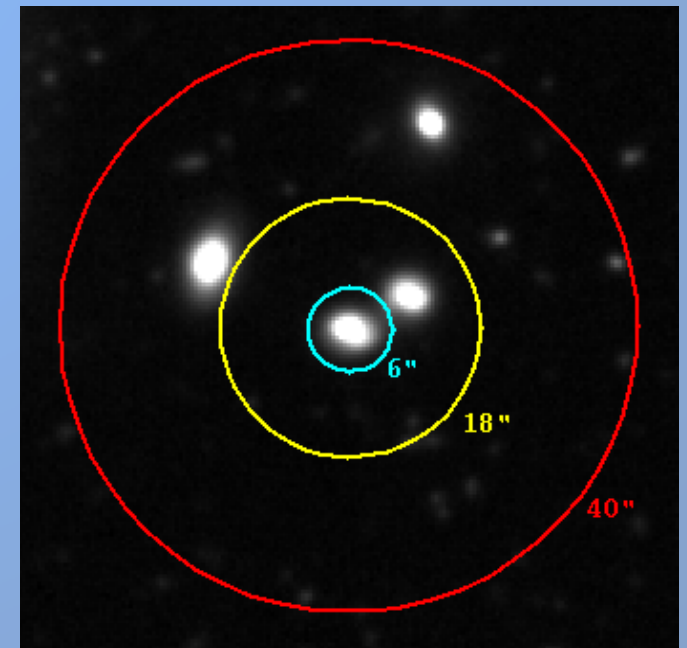
Confusion!

- Average fractional confusion flux from a background source:

$$F = n_E \int W_{D,E}(\theta) e^{-\theta^2/2\sigma^2} 2\pi\theta d\theta$$

- Modified Landy & Szalay (1993) estimator for correlation function:

$$W_{D,E}(\theta) = \frac{DE - 2DR - RR}{RR}$$

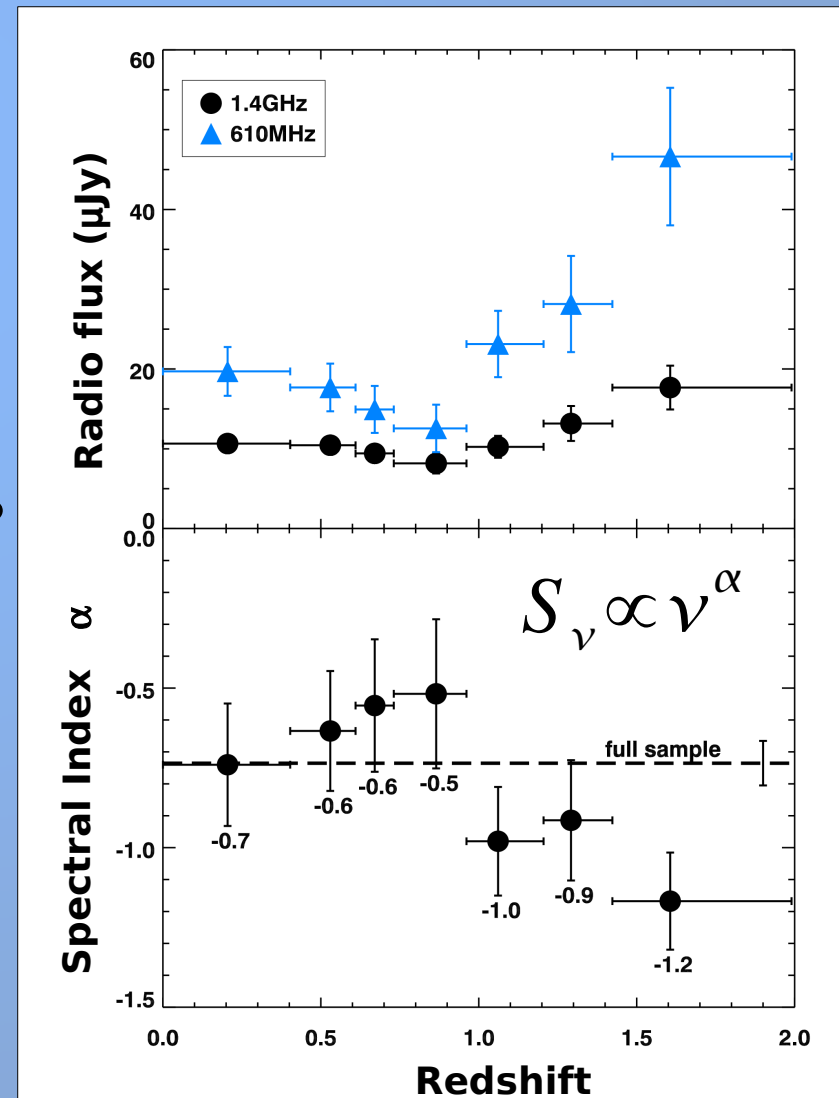


Results: Stacked Radio Fluxes

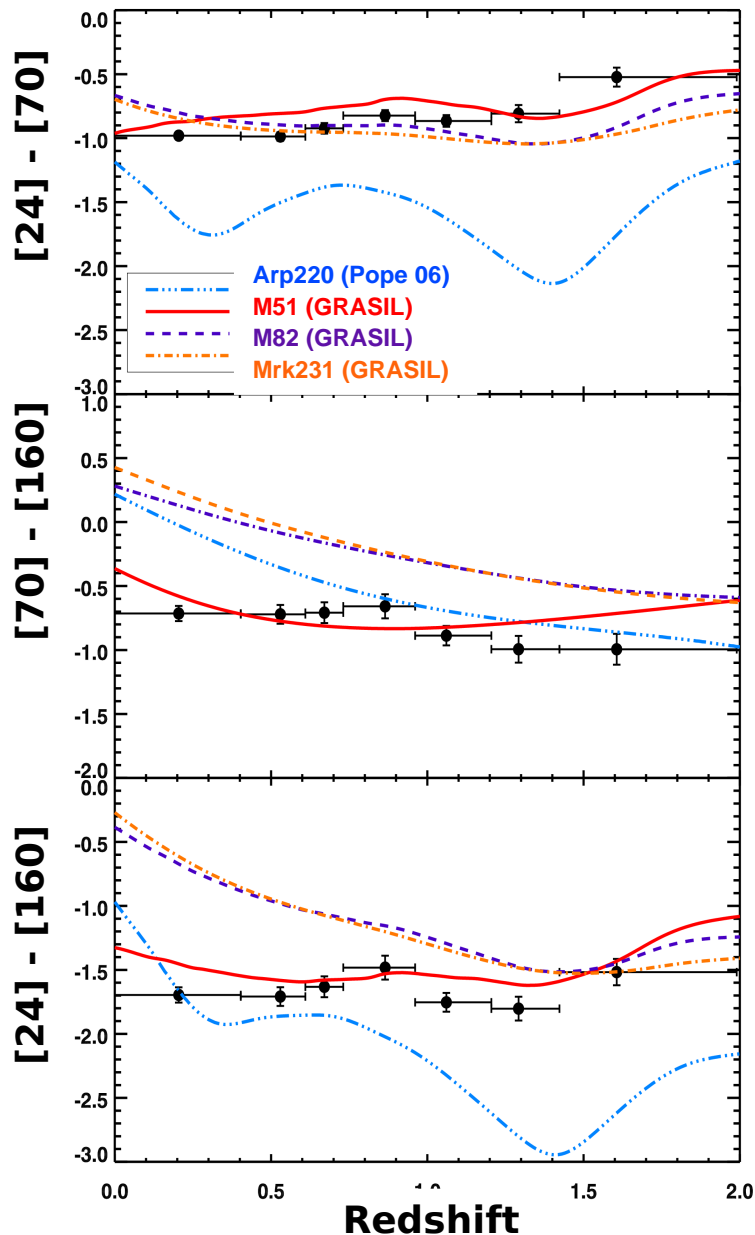
- Empirically determine spectral index and k-corr.
- Evolution of spectral index?
- Increasing radio luminosities with redshift

Median $\langle z \rangle$	Bin	$L_{1.4}, WHz^{-1}$	$SFR_{1.4}, M_{\odot}yr^{-1}$
0.21	ZB0	$(1.26 \pm 0.08) \times 10^{21}$	1.51 ± 0.10
0.53	ZB1	$(1.13 \pm 0.10) \times 10^{22}$	13.6 ± 1.2
0.67	ZB2	$(1.84 \pm 0.21) \times 10^{22}$	22.1 ± 2.5
0.87	ZB3	$(3.00 \pm 0.46) \times 10^{22}$	36.0 ± 5.5
1.06	ZB4	$(6.24 \pm 0.84) \times 10^{22}$	75 ± 10
1.29	ZB5	$(1.32 \pm 0.22) \times 10^{23}$	158 ± 26
1.61	ZB6	$(3.03 \pm 0.47) \times 10^{23}$	364 ± 56

(SFR estimate - Condon 1992)



Observed Colours



Results: FIR SEDs

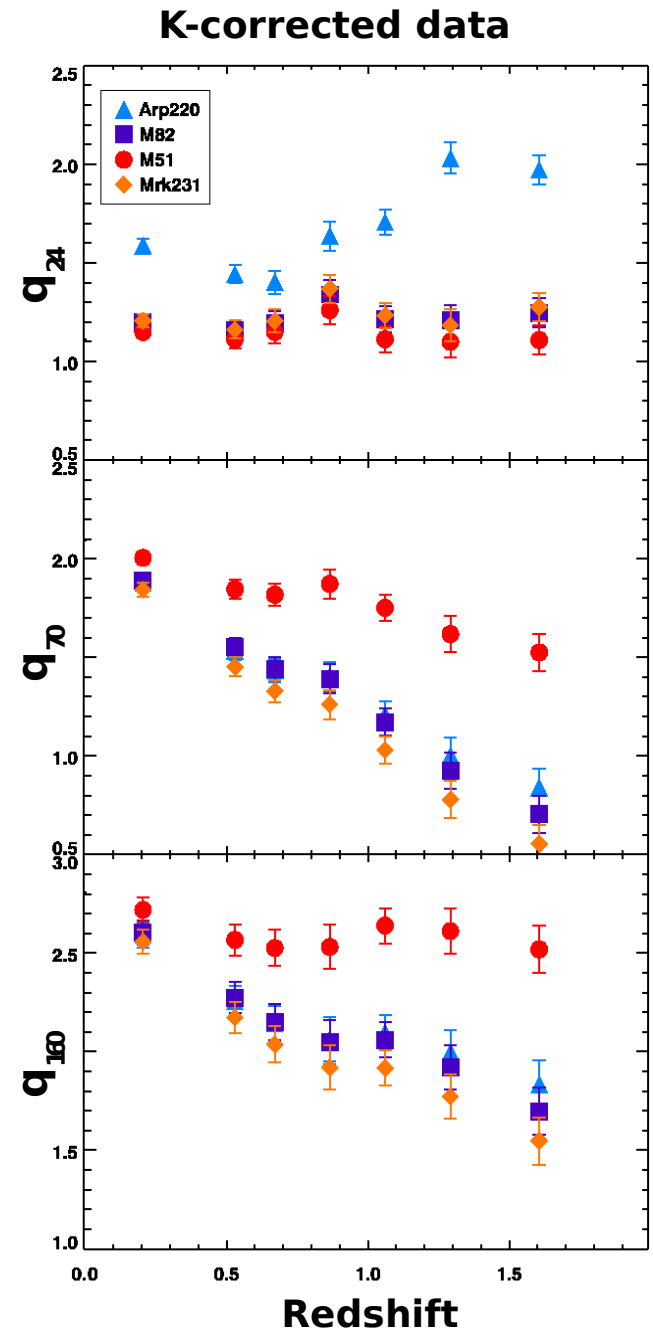
- Need to use an SED template for k-corrections
- Normal spiral SED best match
- Implies cold dust temperatures and moderate total IR luminosities
- See increasing L_{IR} with z

Median $\langle z \rangle$	Bin	$L_{\text{TIR}}, L_{\odot}$	q_{TIR}
0.21	ZB0	$(0.56 \pm 0.14) \times 10^9$	2.7 ± 0.1
0.53	ZB1	$(2.8 \pm 0.7) \times 10^{10}$	2.4 ± 0.1
0.67	ZB2	$(3.9 \pm 1.0) \times 10^{10}$	2.3 ± 0.1
0.87	ZB3	$(6.8 \pm 1.7) \times 10^{10}$	2.4 ± 0.1
1.06	ZB4	$(1.21 \pm 0.30) \times 10^{11}$	2.3 ± 0.1
1.29	ZB5	$(2.19 \pm 0.55) \times 10^{11}$	2.2 ± 0.1
1.61	ZB6	$(4.49 \pm 1.1) \times 10^{11}$	2.2 ± 0.1

(L_{IR} conversion – Dale & Helou 2002)

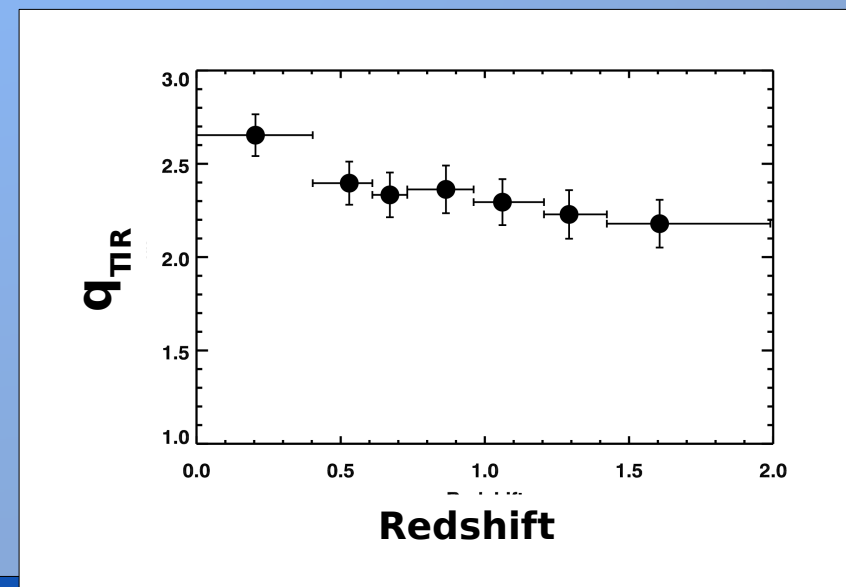
Implications for FRC

- Assuming M51 template (red points) we see no evidence for evolution in q_{24} or q_{160}
- Bump in q_{24} at $z \approx 0.9$: $12.7\mu\text{m}$ PAH or $12.8\mu\text{m}$ [NeII] (Brandl et al 2006)
- What about q_{70} ? Is this due to a steepening 20-70 μm slope?
- This spectral range is influenced by contribution from VSGs (e.g. Desert et al. 1990)



In Context

- Lack of evolution in q_{24} echoes other results in the literature, e.g. Appleton et al (2004) & Ibar et al (2008)
- Seymour et al (2009) also find a decreasing q_{70} not accounted for by k-correction
- Using estimated TIR luminosities, we can plot q_{TIR}
 - This depends on the accuracy of all k-corrections
- However these results seem to be comparable with recent results from Ivison et al (2010) and Sargent et al (2010)



In Context

- Our MIPS colours imply cold dust temperatures
- But cold dust temperatures have been observed in many high- z galaxies selected in the sub-mm and FIR bands
 - e.g. Chapman et al. (2005), Pope et al. (2006, 2008), Symeonidis et al. (2009)
- This sample probes a different population to other studies of the FRC – the IRAC selected sample is characterised by lower SFR and lower L_{IR}

Conclusions

- Stacked FIR and radio images of a NIR-selected sample as a function of z between 0-2
- Properties of the sample do evolve (radio spectrum, IR & radio luminosities)
- But cold-dust dominated SEDs throughout
- Do not believe there is evidence for evolution in the FRC, although $70\mu\text{m}$ fluxes seem less reliable as a tracer than expected